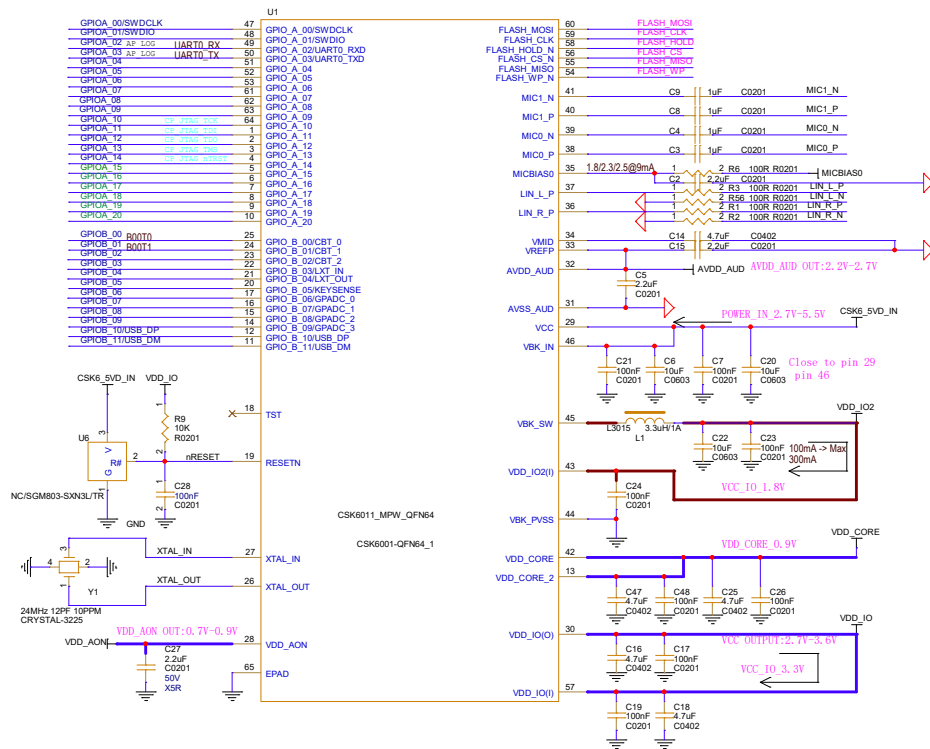
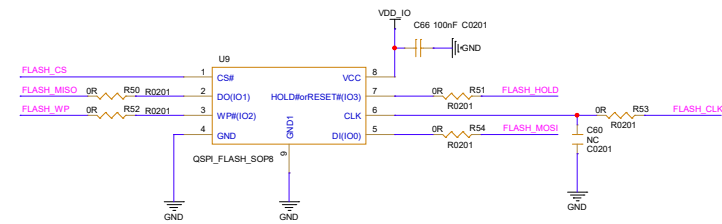


## CSK6011 PART

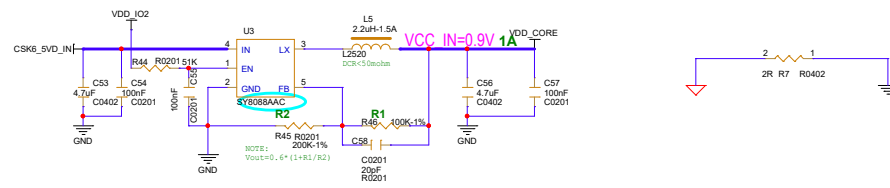


## Nor flash



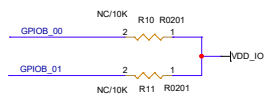
## DCDC OPTION

需要降低功耗时需要将内部0.9V LDO关闭或者将DC输出设置大于芯片内部LDO输出  
没有功耗要求时可以选择空贴



## BOOT MODE SET

```
GPIOB00 = 1;GPIOB01 = 1 <----> Flash Boot
GPIOB00 = 1;GPIOB01 = 0 <----> Uart Boot
GPIOB00 = 0;GPIOB01 = 1 <----> Reserved
GPIOB00 = 0;GPIOB01 = 0 <----> Reserved
```



## CONNECTER PART

